



VINTEK AIR TECHNOLOGY PVT. LTD.,
No.292/14,KEVComplex,ImperialRoad
Salakarai,Cuddalore-607003
Phone:+91-04142237069,Hp:+91-8508209069
E-mail:support@myvintek.in
Web:www.myvintek.in



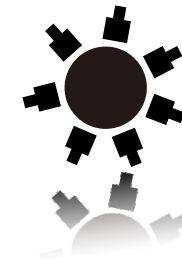
Imported&DistributedBy:
VIRESKO SINGAPORE PTE LTD.,
69UbiRoad1,OxleyBizhub
#07-16,Singapore408731
Phone:+65-64932724Fax:+65-68505162
Email:sales@virescosg.com
Web:www.virescosg.com



Wall Mounted ESP Air Purifier



Product Manual Model: HB-D-B60(ESP)



About us

Vintek Air Technology Private Ltd., is specialized in independent research and development, as well as professional production and sales of sterilizer equipment and sterilized products.

The main products include: Dynamic and static ultraviolet disinfectant, plasma sterilizer, ozone sterilization cabinet, ozone generator, bed unit disinfectant, clean workstation, medical purification screen, biological safety cabinet and other series disinfection products and air purification equipment.

The company always "takes the quality as basis and science and technology as the locomotive" to ensure the credibility of the market. It has been focusing on permanent after-sales services, integrity and innovation, adhering to the enterprise culture of "technology first and innovation important", as well as building a scientific and technologic brand enterprise. We will spare effort to provide wholenhearted services for customers with trust and cooperation.



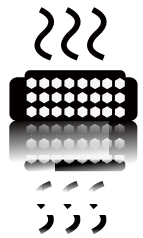
CONTENTS

★ About us	2
Q Contents	3
⚠ Safety Precaution	4
🔌 Overview of Plasma Air Purifier	5
🔧 Main Function	6
⚙ How the air Purifier Clean Room System Works	7
📺 Using the Control Panel	8
📶 Using the Remote Control	9
🔌 Connecting to Power	10
✖ Fault Inspection and Analysis	11
🔌 Simple Circuit Diagram of Cabinet Air Purifier	12
🛡 Warranty Card	13



WARNING
Important safety instructions
READ AND SAVE THESE INSTRUCTIONS

- The device plug should be placed in a place beyond children's reach, to avoid the risk of electric shock;
- In a thunderstorm weather, please pull the plug to protect the device from lighting;
- Under prolonged outage situation, please pull the plug to avoid the occurrence of accidents;
- It's forbidden to inset the power plug via wet hand, so as to avoid electric shock;
- Before starting the device, you should check carefully whether there are foreign bodies blocked in the device wind inlet and outlet;
- Do not put your hand or other objects into the inlet or outlet, so as to avoid personal injury or machine damage;
- The distance between the nearest wall and the inlet or outlet shouldn't be less than 1m, and the machine cannot be placed horizontally or upside down;
- During wet or high temperature weather, or when there are combustible materials nearby, please do not use the remote control to avoid dangers;
- When cleaning the device, you should select organic solvent. Do not use water or other liquids to clean the device, otherwise it might damage the device or cause other risks;
- The device shall not be used in such places as kitchens or bathrooms, etc.;
- Please do not disassemble the machine internal structure, in case of the occurrence of dangers or electric shock during the operation;
- Under abnormal conditions, such as abnormal sound, abnormal high temperature, peculiar smell, smoke or electricity leakage, please turn off the power immediately. You shall consult professional staff instead of dealing with the problems on your own;
- We recommend you to shut down the device when it's running for 24 hours continuously, and restart the device after working every 6 hours. In this way, the service life of the device can be prolonged.
- Children should be under supervision so as to make sure that the device is out of their reach.



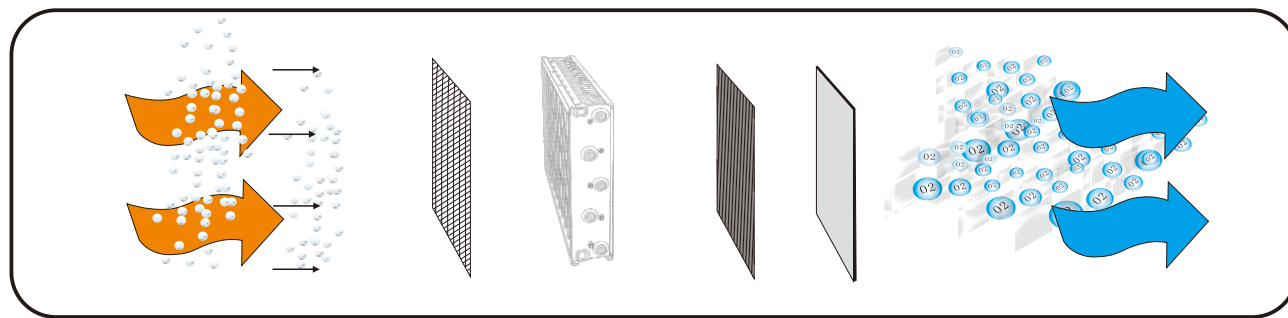
Overview of Electrostatic Precipitator Air Purifier

Working Principle

The air is pumped into the machine by the fan. Indoor polluted air is blown out of the outlet through primary filter, high pressure electric field dust removal, activated carbon filter and HEPA filter. Finally, clean air comes out of the vent. Such repeated cycle work plays a role in filtering dust, removing odors, toxic gases and killing bacteria to achieve purification and disinfection.

Electrostatic Precipitator Technique:

The core component of Electrostatic Precipitator air purifier is electrostatic adsorption device (also known as high voltage electrostatic field). Electrostatic Precipitator device is composed of discharge wire and negative plate. Under the action of the high voltage generator, the Electrostatic Precipitator device can generate 4KV-8KV dc high voltage and form a strong electrostatic field inside the Electrostatic Precipitator device. When indoor polluted air passes through the Electrostatic Precipitator purifier, particles in the air (including microorganisms) are sucked into the machine through the purifier and forced to carry a positive charge and then adsorbed to the negative plate.



Main Function

It mainly can absorb and filter dust, remove odor, kill toxic gas and bacteria to achieve the role of air purification and disinfection.

① Primary filter :

It can remove large particles of dust.

② Electrostatic precipitator :

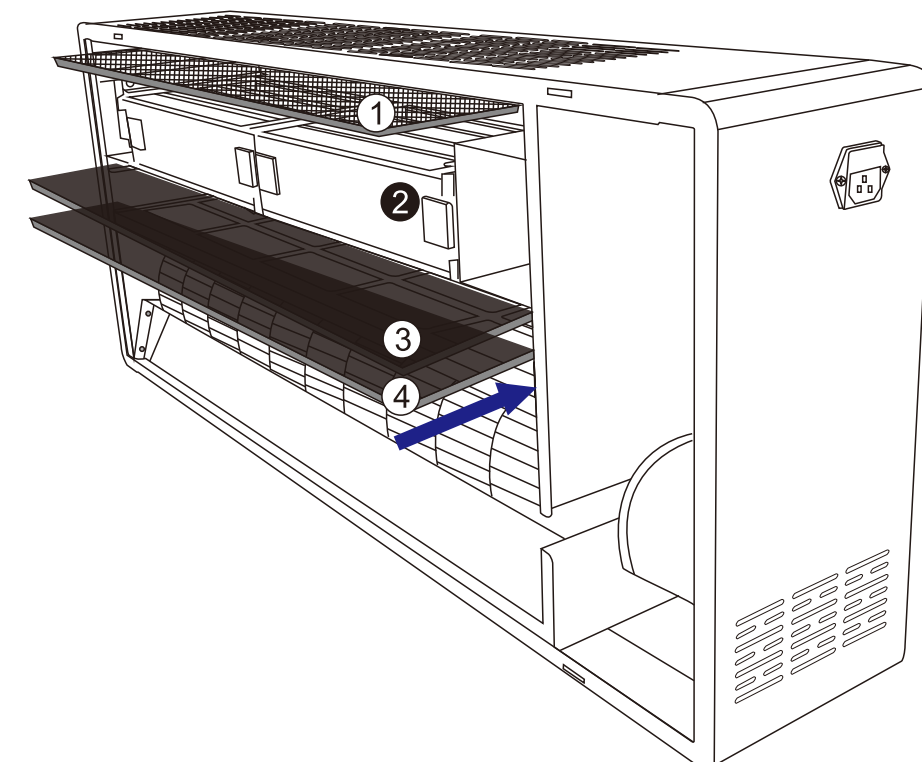
It can capture 95% of the particles of 0.5 microns or more that pass through the air. It can also kill 90% of fungi, 70% of bacteria, and 60% of dust mites.

③ Activated carbon filter:

it also has excellent adsorption function. It can remove formaldehyde, toluene, deodorization and other functions.

④ HEPA filter :

HEPA filter can decompose toxic gas and sterilize, also filter and block dust, especially inhibit secondary pollution to purify air.





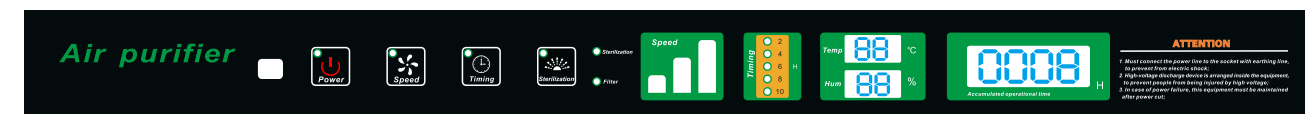
How the HANSTAT Air Purifier Clean Room System Works

1. Room air is drawn into the system via air inlet at the lower end of the machine.
2. The process begins when air moves through the primary filter, which captures the large particles.
3. Next, the air moves through the ESP filter, which captures particles of 0.5 microns, fungi, bacteria and dust mites.
4. The air continues to work through activated carbon filters to remove toxic gases and odors from the air.
5. Finally, the air moves through the HEPA filter, which captures tobacco smoke, dust mites, pollen, dander, smog, mold and other airborne pollutants of a particle size greater than 0.3 microns.
6. Purified air is then returned to the room via air outlet at the upper end of the machine.



Using the Control Panel

The system is equipped with a state-of-the-art control panel. This advanced control panel allows you to assess the unit status with one quick glance.



TOUCH KEY DISPLAY AND DESCRIPTION

- This machine is connected to 110V~240V power (three-phase socket, ground wire). Press button, the display screen lights up.
- Press the **ON/OFF** button on the control panel, at the moment, the device is under normal operation, and the sterilizing unit device and the negative ion generator have already started working, at this point;
- Press the button, the device stops sterilizing and is in standby mode.
- You can control the swing direction via **Wind** on the control panel and adjust the air volume via button. This is a circulating button with three adjustable speed, which are respectively displayed as Low Speed, Medium Speed, High Speed, if you press this button in turn, it will display recurrently. Of course, with different speed, the noise and purification effect produced by this device vary as well.



Using the Remote Control

Use the Remote Control to:

Speed

Wind speed adjusting key,It can be divided into three grades: high/middle/low.

Wind

Blade swaying, currently in standby.

Restore

Cancellation of cumulative working hours.

Sleep

Press this button to pause all work on the machine.

Auto

Automatic mode

Manual

Manual mode

Ionic

Turn this feature on or off

Power

Machine on or off

Timer

Can work regularly for 1-12 hours

ON/OFF

Machine on or off

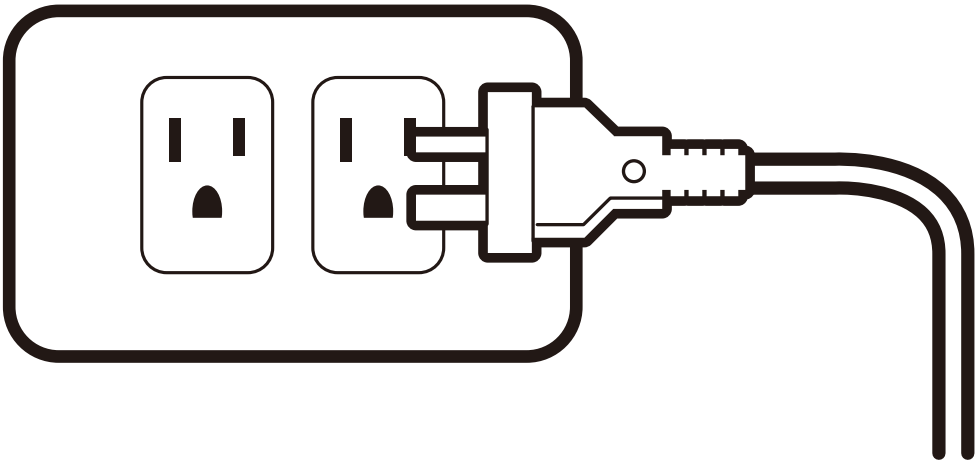
Sterilize

Sterilization mode open/close

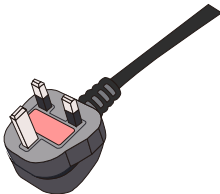


Connecting to Power

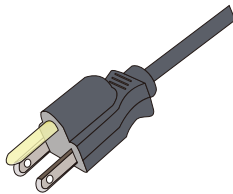
After selecting the location for you air purifier and the space around where it will stay, connect the power cord to the unit and the other end into the socket.



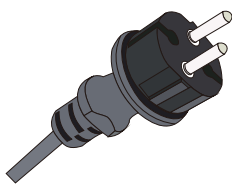
Plug type may vary, we also have other types of plugs



Britain plug



American Plug



German plug



Australia Plug

★ We can customize the plug and voltage according to customer's requirements



Fault Inspection and Analysis

The machine doesn't work

- The power plug is off
- The power is not on
- The fuse wire is broken
- The motor overload protection

The blower doesn't work

- The capacitor burns out
- The electric relay is broken
- The blower motor is damaged

The sterilizing unit doesn't work

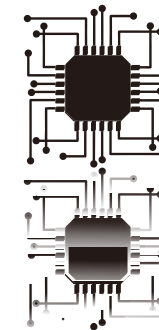
- The sterilizing unit is damaged
- The sterilizing unit terminals are of poor connection

The air volume decreases

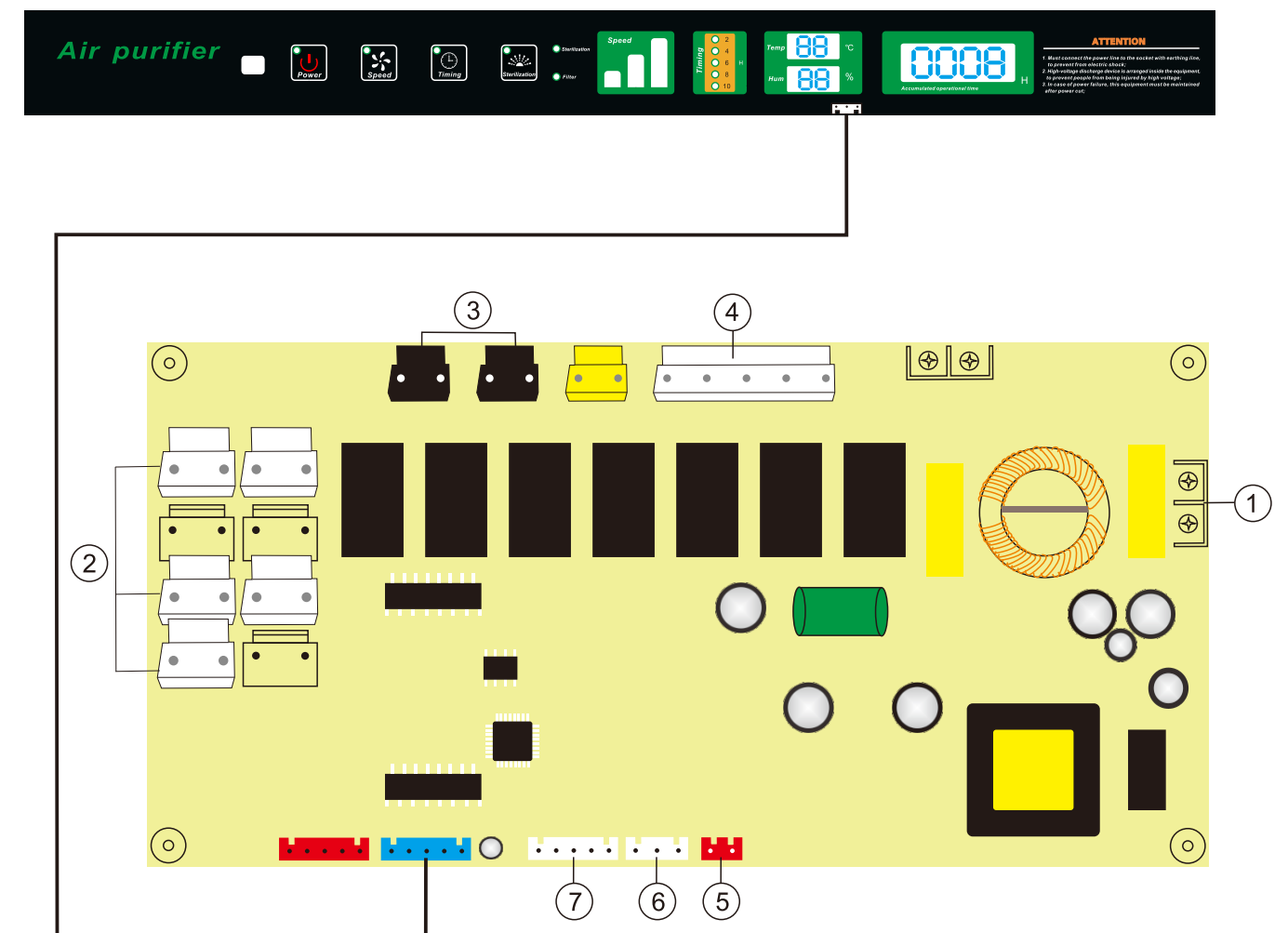
- The power voltage is too low
- The filter is of too much accumulated dust

Note:

Above-mentioned electrical faults shall be examined and repaired by qualified electrical repair personnel or you shall contact our company, and please do not disassemble the machine on your own, so as to avoid electric shock accidents or expansion of fault coverage.



Simple Circuit Diagram of Ceiling Air Purifier



- ①Power inlet ②Load output ③Anion ④Fan ⑤Feedback signal
- ⑥Connector wire ⑦Temperature and humidity sensor



Warranty Card



Company Name			
Address			
Date of Purchase		Invoice No	
Product Name		Model Number	
Date of Production		Serial Number	
Tel		Fax	
The Fault Situation			
Date of Application		Applicant	

Attention:

- The warranty is 1 year.
- The product will be repaired free of charge during the warranty period.
- Normally air filter accessories are consumables.
- If there is any problem during using, please contact us in time.

Please read the instructions carefully and observe by the operating guidance and maintenance methods so as to avoid injury or property damage. Please pay more attention to the above points.